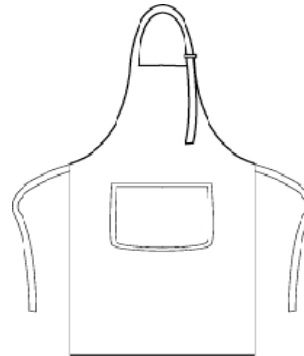


PR154

'COLOURS' BIB APRON WITH POCKET

CARTON	PACK	NO. SKU'S
72	6	40



Colour	Pantone	C	M	Y	K	Colour	Pantone	C	M	Y	K
Apple	360	64	0	80	0	Natural	1205	0	5	31	0
Aqua	344	32	0	31	0	Navy	2766	100	87	0	34
Aubergine	5115	53	91	21	72	Oasis Green	371	58	9	95	64
Black	Black	0	0	0	100	Olive	378	48	11	98	70
Bottle	560	69	0	60	76	Orange	1655	0	65	87	0
Brown	476	30	72	74	84	Pink	1895	0	30	6	0
Burgundy	216c	0	83	34	47	Purple	269	82	98	5	26
Chestnut	7525	13	56	61	32	Red	200	0	100	65	15
Dark Grey	431c	11	0	0	65	Rich Violet	2587	60	71	0	0
Emerald	341	100	0	69	30	Royal	286	100	60	0	6
Fuchsia	219	1	92	1	0	Sapphire	300	99	51	0	0
Hot Pink	214c	0	100	24	4	Sage	5497	40	9	21	32
Khaki	7503	0	12	35	25	Silver	428	10	4	4	14
Lemon	127	0	4	60	0	Steel	7545	56	30	17	52
Light Blue	2708	3	4	9	0	Strawberry Red	186	2	100	82	6
Lilac	264	27	30	0	0	Sunflower	136c	0	27	79	0
Lime	382	29	0	96	0	Teal	3155	100	10	28	47
Marine Blue	281	100	85	5	35	Terracotta	159	1	74	100	7
Mid Blue	2718	72	43	0	0	Turquoise	312	89	0	11	0
Mocha	7505	17	44	59	51	White	White	0	0	0	0

Fabric

65% Polyester, 35% Cotton twill. 195gsm

Colours

Apple, Aubergine, Aqua, Black, Bottle, Brown, Burgundy, Chestnut, Dark Grey, Emerald, Fuchsia, Hot Pink, Khaki, Lemon, Light Blue, Lilac, Lime, Mid Blue, Mocha, Natural, Navy, Olive, Orange, Pink, Purple, Red, Rich Violet, Royal, Sage, Sapphire, Silver, Steel, Strawberry, Sunflower, Teal, Terracotta, Turquoise, White

Sizes

One size

Features

- Bib Apron with pocket and combined pen pocket
- Available in 40 colours
- Self fabric neck band and 90cm self fabric ties
- Width, 72cm, Length, 86cm
- Sliding adjusting buckle

Country of Origin

China & Bangladesh

Carton Dimensions

60cm x 40cm x 24cm

Carton Weight

15.1kg

VAT Code

6211 43 1000

Marketing Description

A classic Bib Apron that features a centre pocket with built in pen pocket. Available in 40 colours from the Premier 'Colours Collection', this apron has a sliding adjustable buckle on the neckband so the wearer can adjust the overall length.



INDUSTRIAL LAUNDERING 85°C MAXIMUM