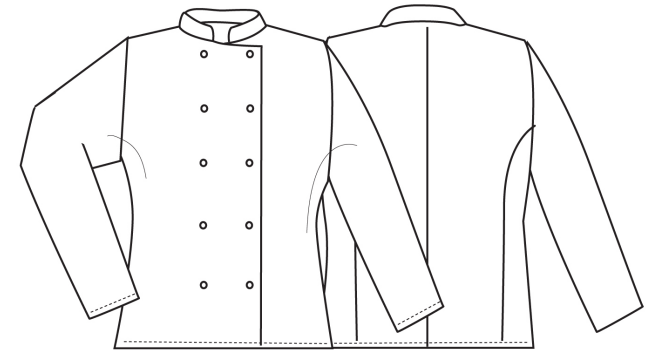


PR671**LADIES' LONG SLEEVE CHEF'S JACKET**

CARTON	PACK	NO. SKU'S
24	6	6



Colour	Pantone	C	M	Y	K
White	White	0	0	0	0

**Fabric**

65% Polyester, 35% Cotton Twill, 195gsm

Colours

White

Sizes

XS, S, M, L, XL, 2XL

Features

- Women's fitted chefs jacket
- Long sleeved
- Ten button hole wrap-over fastening
- Panelled back for more fitted style
- Left sleeve pen pocket
- Mandarin collar

Country of Origin

Bangladesh

Carton Dimensions

60cm x 40cm x 22cm

Carton Weight

8kg approx.

VAT Code

6211 43 1000

Size	XS	S	M	L	XL	2XL
Bust to fit''	33	37	41	45	49	53
Bust to fit cm	84	89	94	99	104	109
Bust actual cm	94	99	104	109	114	120
DE,NL	36	38	40	42	44	46
FR,ES,PT	36	38	40	42	44	46
IT	40	42	44	46	48	50

Marketing Description

A welcome addition to the existing Premier range of chefs wear, this long sleeved jacket is designed for women. Offering a neater fit around the waist and bust areas, this jackets is still comfortable and roomy enough to work in pressurised kitchen environments.



INDUSTRIAL LAUNDERING 85°C MAXIMUM