

PR309**LADIES' SHORT SLEEVE SUPREME POPLIN BLOUSE**

| | CARTON | PACK | TOTAL SKUS |
|------------------|--------|------|------------|
| SIZES 8 - 20 | 24 | 6 | 21 |
| SIZES 22 - 26 | 12 | 3 | 9 |

**Fabric:**

65% Polyester, 35% Cotton, plain Poplin weave, 125gsm,

Colours

Black, White, Light Blue

Sizes

8, 10, 12, 14, 16, 18, 20, 22, 24, 26

Features

- Ladies' easy care short sleeve blouse with improved wear and appearance
- Supreme Poplin
- Soft collar styling
- Rounded bottom hem
- Fitted styling with bust and back darts

Country of Origin

Bangladesh

Carton Dimensions

57cm x 36cm x 19cm / 57cm x 36cm x 15cm

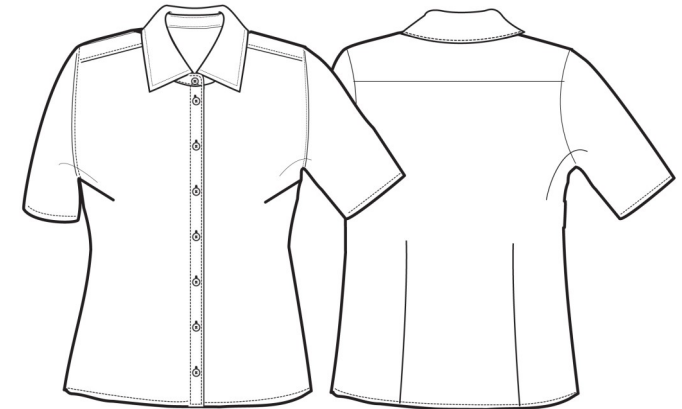
Carton Weight

7.2kg / 3.7kg

VAT Code

6206 400000

| Colour | Pantone | C | M | Y | K |
|------------|---------|---|---|---|-----|
| Black | 0 | 0 | 0 | 0 | 100 |
| White | White | 0 | 0 | 0 | 0 |
| Light Blue | 2708 | 3 | 4 | 9 | 0 |



| Size | 8 | 10 | 12 | 14 | 16 | 18 | 20 | 22 | 24 | 26 |
|----------------|----|----|------|-----|------|-----|------|-----|------|-----|
| Collar cm | 40 | 41 | 42.5 | 44 | 45.5 | 47 | 48.5 | 50 | 51.5 | 53 |
| Bust to fit " | 33 | 35 | 37 | 39 | 41 | 43 | 45 | 47 | 49 | 51 |
| Bust to fit cm | 84 | 89 | 94 | 99 | 104 | 109 | 114 | 119 | 124 | 129 |
| Call size | XS | S | M | L | XL | 2XL | 3XL | 4XL | 5XL | 6XL |
| Bust actual cm | 94 | 99 | 104 | 109 | 114 | 119 | 124 | 129 | 134 | 139 |
| DE,NL | 36 | 38 | 40 | 42 | 44 | 46 | 48 | 50 | 52 | 54 |
| FR,ES,PT | 36 | 38 | 40 | 42 | 44 | 46 | 48 | 50 | 52 | 54 |
| IT | 40 | 42 | 44 | 46 | 48 | 50 | 52 | 54 | 56 | 58 |

Marketing Description

A ladies short sleeve Supreme Poplin blouse which comes in a heavy weight material resulting in a longer lasting shirt with improved appearance. The fitted styling, soft collar and rounded hem create a flattering fit.



WASH DARK COLOURS SEPARATELY, WASH INSIDE OUT, DO NOT SOAK, DO NOT DRY CLEAN