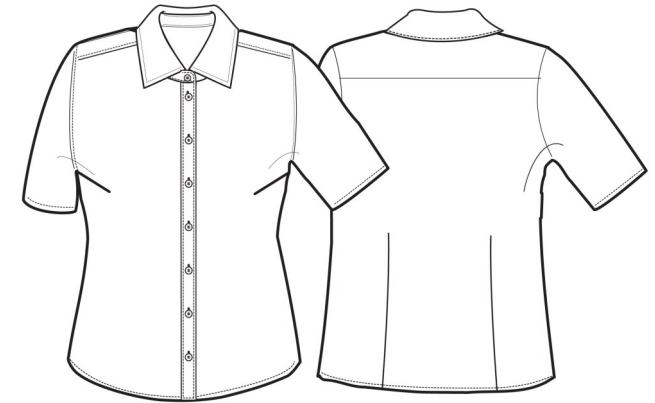


	CARTON	PACK	TOTAL SKUS
SIZES 8 - 20	24	6	14
SIZES 22 - 24	12	3	4



## PR336 LADIES' SIGNATURE OXFORD SHORT SLEEVE BLOUSE

Colour	Pantone	C	M	Y	K
Black	Black	0	0	0	100
Light Blue	2708	3	4	9	0
Silver	428c	0	0	0	23
White	White	0	0	0	0



### Fabric

70% Cotton, 30% Polyester, Cotton Rich Oxford Weave, 135gsm

**Colours** Black, Light Blue, Silver, White

**Sizes** 8, 10, 12, 14, 16, 18, 20, 22, 24, 26

**Features**

- Ladies' Signature Oxford short sleeve easy care blouse with wrinkle free finish for a smart and professional appearance
- Soft collar styling
- Rounded bottom hem
- Fitted styling with bust and back darts
- Pearlised buttons on light blue and white shirt, self colour buttons on remaining
- Easy cut-out label for rebranding

**Country of Origin** Bangladesh

**Carton Dimensions** 36 cm x 57cm x 57cm

**Carton Weight** 10.03 kg approx.

**VAT Code** 6205 30 0000

Size	8	10	12	14	16	18	20	22	24	26
<b>Collar cm</b>	40	41	42.5	44	45.5	47	48.5	50	51.5	53
<b>Bust to fit "</b>	33	35	37	39	41	43	45	47	49	51
<b>Bust to fit cm</b>	84	89	94	99	104	109	114	119	124	129
<b>Call size</b>	XS	S	M	L	XL	2XL	3XL	4XL	5XL	6XL
<b>Bust actual cm</b>	94	99	104	109	114	119	124	129	134	139
<b>DE,NL</b>	36	38	40	42	44	46	48	50	52	54
<b>FR,ES,PT</b>	36	38	40	42	44	46	48	50	52	54
<b>IT</b>	40	42	44	46	48	50	52	54	56	58

### Marketing Description

This short sleeve ladies Oxford blouse is an essential wardrobe item during the warmer months. Bust and back darts make for a flattering fit and the soft collar styling and rounded bottom hem ensure a feminine workwear blouse for women.

