

CARTON	PACK	NO. SKU'S
24	6	45

**Fabric**

100% Polyester plain weave, 185gsm

Colours

Bottle Green, Mid Blue, Navy Blue, Royal Blue, White

Sizes

8, 10, 12, 14, 16, 18, 20, 22, 24

Features

- Healthcare trousers
- Deep waist band trouser
- Front fastening zip
- Cross over waist band with 2-button fastening
- Two front pockets
- Belt loops
- Elasticated back waistband
- Full length trouser (84cm inside leg)

Country of Origin

Bangladesh

Carton Dimensions

41cm x 60cm x 24 cm

Carton Weight

10.80 kg approx.

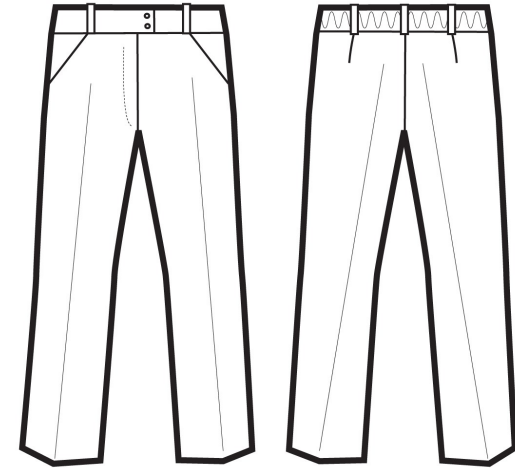
VAT Code

6211 43 1000

PR514

'POPPY' LADIES HEALTHCARE TROUSERS

Colour	Pantone	C	M	Y	K
Bottle	560	69	0	60	76
Mid Blue	2718	72	43	0	0
Navy Blue	2766	100	87	0	34
Royal Blue	286	100	60	0	6
White	White	0	0	0	0



Size	8	10	12	14	16	18	20	22	24
Waist to fit "	24	26	28	30	32	34	36	38	40
Waist to fit cm	59	64	69	74	79	84	89	94	99
Waist actual cm	76	81	84	89	94	99	104	109	114
DE,NL	36	38	40	42	44	46	48	50	52
FR,ES,PT	36	38	40	42	44	46	48	50	52
IT	40	42	44	46	48	50	52	54	56

Marketing Description

Premier's 'Poppy' deep waistband trouser has a cross over waistband with a two button fastening and zip for a comfortable trouser suitable for long shifts in the Healthcare industry.



INDUSTRIAL LAUNDERING 85°C MAXIMUM