

## PR620

### MEN'S HOSPITALITY WAISTCOAT

CARTON	PACK	NO. SKU'S
24	6	5



#### Fabric

65% Polyester, 35% Cotton twill, 195gsm

#### Colours

Black,

#### Sizes

S, M, L, XL, 2XL

#### Features

- Men's easy care waistcoat
- Contemporary style five button waistcoat
- Two functional watch pockets
- Self fabric back
- Complements ladies PR621

#### Country of Origin

China

#### Carton Dimensions

60cm x 40cm x 22cm

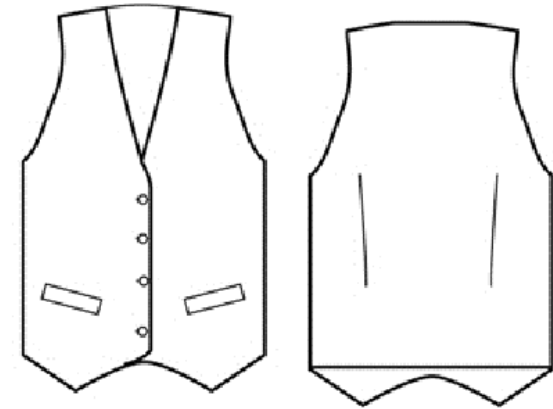
#### Carton Weight

10kg approx.

#### VAT Code

6211339000

Colour	Pantone	C	M	Y	K
Black	Black	0	0	0	100



Call size	S	M	L	XL	2XL
Chest to fit "	36	40	44	46	52
Chest to fit cm	86	96	106	116	126
Chest actual cm	104	112	120	128	136
DE,NL	46	48	52	56	58
FR,ES,PT	42	44	46	48	50

#### Marketing Description

A men's hospitality waistcoat with contemporary five button fastening and two functional watch pockets. This waistcoat is great for those who require a more smart and formal approach to service uniforms and it looks great over a Premier shirt with a complementing tie.



INDUSTRIAL LAUNDERING 85°C MAXIMUM