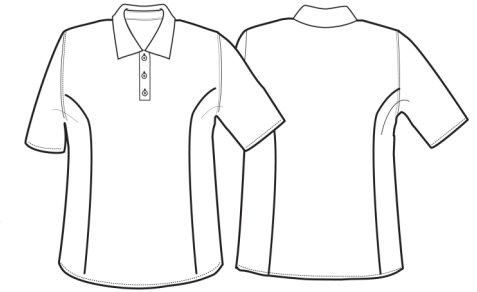


PR630

MEN'S COOLCHECKER PLUS PIQUE POLO —COOLPLUS®



CARTON	PACK	NO. SKU'S
36	6	124



Colour	Pantone	C	M	Y	K	Colour	Pantone	C	M	Y	K
Black	Black	0	0	0	100	Burgundy	216c	0	83	34	47
Navy	2766	100	87	0	34	Silver	428	10	4	4	14
White	White	0	0	0	0	Light Blue	2708	3	4	9	0
Red	200	0	100	65	15	Sapphire	300	99	51	0	0
Dark Grey	431c	11	0	0	65	Bottle	560	69	0	60	76
Royal	286	100	60	0	6	Orange	1655	0	65	87	0
Purple	269	82	98	5	26	Kelly	355	94	0	100	0
Turquoise	312	89	0	11	0	Yellow	Yellow c	0	0	100	0

Fabric

100% Coolplus Polyester Pique, 185gsm

Colours

*Black, *Navy, *White, *Red, *Dark Grey, *Royal, Purple, Turquoise, Burgundy, Silver, Light Blue, Sapphire, Bottle, Orange, Kelly, Yellow

Sizes

S, M, L, XL, 2XL, 3XL, 4XL, *5XL, *6XL

Features

- Ribbed knit collar and cuffs
- 3 button placket, self coloured
- Side panels for semi fitted styling
- Double pique knit
- Snag resistant, crease resistant, shrink resistant
- CoolPlus® wicking yarn for comfort
- Quick dry for everyday use
- Excellent colour retention wash after wash
- Silvadur™ technology for antibacterial odour resistance

Country of Origin

Bangladesh

Carton Dimensions

54cm x 43cm x 38cm

Carton Weight

13.60kg

VAT Code

6105 20 1000

Call size	S	M	L	XL	2XL	3XL	4XL	5XL	6XL
Chest to fit"	34	38	42	46	50	52	54	58	62
Chest to fit cm	87	96	107	117	126	132	138	142	146
Chest actual cm	98	104	110	116	122	128	134	140	144
DE, NL	46	48	52	56	58	62	66	70	74
FR, ES, PT	36	38	40	42	44	46	48	50	52

Marketing Description

The next generation in performance polo shirts, this men's style uses CoolPlus® fibre technology to give exceptional moisture management properties when working under pressure. A modern and stylish piece of everyday workwear that will make for a smart and professional looking workforce.

