

PR625 Men's Herringbone Waistcoat

Description

An attractive, versatile waistcoat with for men. Styled with a lapel collar that leads into the main body of the waistcoat with five button fastening. The Herringbone pattern has been achieved by two coloured yarns being woven together. This waistcoat is fully lined on the underside and to the reverse where there is a buckle for the wearer to adjust accordingly.

Product Features:

- Satin-feel lining to the underside and reverse
- Lapel collar
- Front and back darts and adjusting buckle on the back for fitting
- Two front open pockets
- Five button fastening

Available In:

XS, S, M, L, XL, 2XL

Certifications:



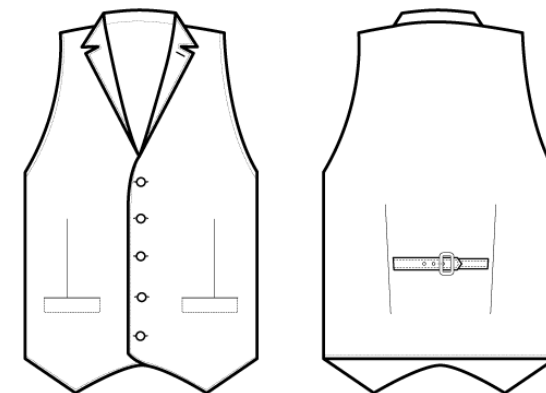
Colours:

Colour	Pantone	C	M	Y	K
Brown Check	7519 C	24	42	45	68
Charcoal	7540c	41	28	22	70
Navy	533c	95	72	15	67

Fabric:

Front: 50% Polyester, 45% Wool, 5% mixed fibres. 300gsm.

Back & Lining: 100% Polyester Satin, 70gsm



Suggested Decoration:

Screen Print, Transfer Print, Embroidery

Country of Origin:

China

Commodity Code:

6211 39 0090

Wash Care:



Carton Information:

Sizes	Carton	Pack	SKU's	Carton Weight	Carton Dimensions
All Sizes	24	6	18	13kg	60cm x 40cm x 22cm

Garment Sizes:

Call size	XS	S	M	L	XL	2XL
Chest to fit"	32	36	40	44	46	52
Chest to fit cm	76	86	96	106	116	126
Chest actual cm	96	104	112	120	128	136
Back length cm	58	58	58	58	58	58