

PR305 Women's Poplin 3/4 Sleeve Blouse

Description

A semi fitted blouse for women that offers a fashionable three-quarter length sleeve. The sleeve is finished off with a neat vented cuff and the bust and back area offers a flattering cut that gives the blouse its fitted appearance.

Product Features:

- Soft collar styling
- Rounded bottom hem
- Feminine fit style with bust and back darts.
- Three quarter sleeves with vented cuff

Available In:

6 (Black & White Only), 8, 10, 12, 14, 16, 18, 20, 22, 24, 26

Certifications:

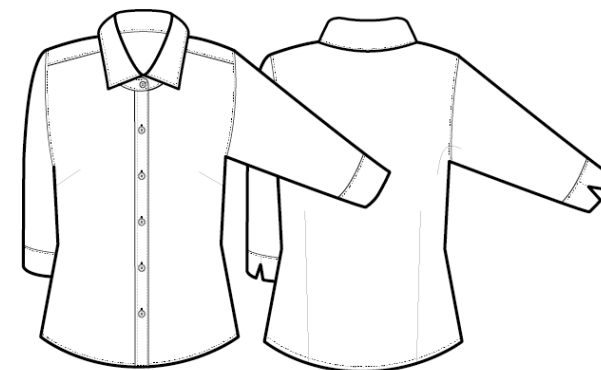


Colours:

| Colour | Pantone | C | M | Y | K |
|------------|---------|-----|-----|----|-----|
| Black | Black c | 0 | 0 | 0 | 100 |
| Light Blue | 2707c | 20 | 6 | 0 | 0 |
| Mid Blue | 2135c | 62 | 39 | 0 | 0 |
| Red | 201c | 7 | 100 | 68 | 32 |
| Royal | 7686c | 100 | 73 | 0 | 0 |
| Silver | 429c | 21 | 11 | 9 | 23 |
| White | White | 0 | 0 | 0 | 0 |

Fabric:

65% Polyester, 35% Cotton Poplin, 105gsm.
White: 115gsm.



Suggested Decoration:

Screen Print, Transfer Print, Embroidery

Country of Origin:

Bangladesh

Commodity Code:

6206 40 0000

Features:



Wash Care:



Carton Information:

| Sizes | Carton | Pack | SKU's | Carton Weight | Carton Dimensions |
|-------|--------|------|-------|---------------|-------------------|
| 6-20 | 36 | 6 | 51 | 7.2kg | 58cmx38cmx16cm |
| 22-26 | 12 | 3 | 21 | 2.8kg | 58cmx28cmx15cm |

Garment Sizes:

| Size | 6 | 8 | 10 | 12 | 14 | 16 | 18 | 20 | 22 | 24 | 26 |
|----------------|-----|----|----|-----|-----|-----|-----|-----|-----|-----|-----|
| Bust to fit" | 31 | 33 | 35 | 37 | 39 | 41 | 43 | 45 | 47 | 49 | 51 |
| Bust to fit cm | 79 | 84 | 89 | 94 | 99 | 104 | 109 | 114 | 119 | 124 | 129 |
| Bust actual cm | 91 | 93 | 98 | 103 | 108 | 113 | 118 | 124 | 131 | 136 | 141 |
| Call size | 2XS | XS | S | M | L | XL | 2XL | 3XL | 4XL | 5XL | 6XL |
| Back length cm | 63 | 63 | 64 | 65 | 65 | 66 | 66 | 67 | 67 | 68 | 68 |